

SHREE SHYAM GLOBAL

shreeshyamglobal@hotmail.com

Add: A-748, Shastri Nagar, Delhi- 110 052, India

Catalogue

Feature

Diameter: M2.5- M12

Length: 2.5mm – 150mm

Material: Carbon Steel,

Standard: GB, ANSI, BS, JIS, DIN, Non-standard

Surface treatment: Zinc Plated, Nickel Plated etc.

Package: According to customer's requirement

QUALITY: ISO 9001:2008

Tapping screw series

Categories: type A, type AB, type B, type BT, type 2A and type 2B with various kinds of head types and drive type.

Application: mainly used in household eclectic appliance, assembly of electronic products, auto fittings.



Note: the part hereof only shows our manufacturing capacities, if customers have any parts of similar manufacturing methods, please send us the drawing and specifications for our accurate quotation.

SHREE SHYAM GLOBAL



Machine screw series

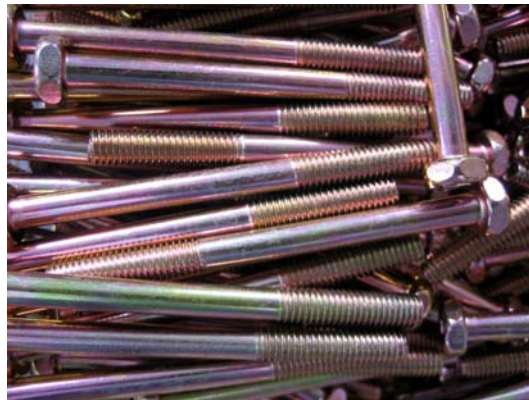
Categories: type M, type MA and type MT with various kinds of head and drives.

Application: mainly used in household electric appliance, assembly of electronic products, auto fittings.



Note: the part hereof only shows our manufacturing capacities, if customers have any parts of similar manufacturing methods, please send us the drawing and specifications for our accurate quotation.

SHREE SHYAM GLOBAL



Taptite screw

Note: the part hereof only shows our manufacturing capacities, if customers have any parts of similar manufacturing methods, please send us the drawing and specifications for our accurate quotation.

SHREE SHYAM GLOBAL

Non-standard fasteners

If you need non-standard fasteners, show us your drawings, we can make the right ones.



Note: the part hereof only shows our manufacturing capacities, if customers have any parts of similar manufacturing methods, please send us the drawing and specifications for our accurate quotation.